



JASON AYCOCK
AUCTIONEERING

3878 NC 581 HWY,
LOUISBURG, NC 27549

TWO AUCTIONS!!

**LYNWOOD EVERETT
FARM EQUIPMENT
AUCTION**

**SATURDAY
JANUARY 24TH @ 10:00AM**
2148 FRED EVERETT RD
KINSTON, NC

**OLD HICKORY FARMS
SATURDAY
JANUARY 31ST @ 10:00AM**
3454 STEWART RD
JARRETT, VA

JASON AYCOCK
AUCTIONEERING, INC.

919-495-0285
NCAL-6679 NCFL-8621 VAL-004616

PRESORTED
First Class Mail
US Postage
PAID
Raleigh, NC
Permit No. 1910

Your Permanent Buyers Number



JASON AYCOCK
AUCTIONEERING

3878 NC 581 HWY,
LOUISBURG, NC 27549

LYNWOOD EVERETT FARM EQUIPMENT AUCTION

2148 FRED EVERETT RD • KINSTON, NC

**2 AUCTIONS!!!!
JANUARY 24TH &
JANUARY 31ST**

**SATURDAY, JANUARY 24TH
at 10:00 am**

**SALE HELD
RAIN OR SHINE**



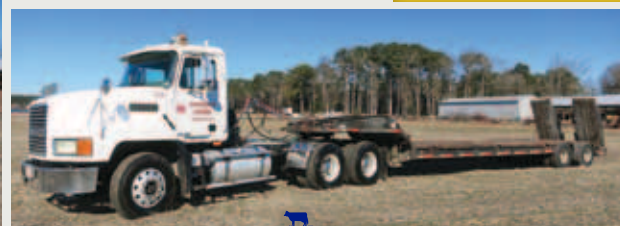
Bidding Available Thru
proxibid

**BID
NOW** Online Bidding Provided By
EquipmentFacts



**SALE HELD
RAIN OR SHINE**

**SATURDAY, JANUARY 24TH
at 10:00 am**



JASON AYCOCK
AUCTIONEERING
www.jasonaycockauctioneering.com

DIRECTIONS: FROM SNOW HILL @ HWY 58/258
INTERSECTION, TRAVEL 8.4 MILES ON 258
TO FRED EVERETE RD. TURN RIGHT AND
SALE SITE IS ON THE RIGHT.
2148 FRED EVERETT RD, KINSTON, NC

TERMS AND CONDITIONS OF THE SALE: All items are sold as is, where is, with no warranties implied in any manner. Items are sold and represented to the best of our knowledge but are not guaranteed. Mileage and hours are noted and recorded, but not certified or guaranteed by the auction firm. Buyers must inspect items prior to purchasing. Sale day announcements take precedence over printed material. All items must be paid for with cash or good check the day of the sale before removing from sale site. The Auctioneer reserves the right to combine, group and sale separate items on the sale at any time. Once items are sold, they are the buyers responsibility. Not Responsible for accidents.

Cash or good check. Bank letter may be needed on new customers on larger items. Hauling available. There is **NO BUYER'S PREMIUM**

AUCTIONEER NOTE: MR. EVERETT HAS FARMED GRAIN & TOBACCO FOR 45 YEARS AND HAS DECIDED TO LIQUIDATE HIS GRAIN EQUIPMENT TO FOCUS MORE TIME ON TOBACCO PRODUCTION. THIS EQUIPMENT IS SOLID WITH LOTS OF LIFE REMAINING. WE LOOK FORWARD TO SEEING YOU ON JANUARY 24TH STARTING @ 10AM. **FOR MORE INFORMATION LYNWOOD @ (252) 560-1151.**

JASON AYCOCK AUCTIONEERING, INC. • NCAL - 6679 • NCFL - 8621 • VAL - 004616 • jason@jasonaycockauctioneering.com • 919-495-0285

JASON AYCOCK AUCTIONEERING, INC.

919-495-0285

WWW.JASONAYCOCKAUCTIONEERING.COM

NCAL-6679

NCFL-8621

VAL-004616

**SATURDAY, JANUARY 24TH
at 10:00 am**

**No Buyers'
Premium**

LYNWOOD EVERETT FARM EQUIPMENT AUCTION

2148 FRED EVERETT RD • KINSTON, NC

Bidding Available Thru
proxibid

BID NOW Online Bidding Provided By
Equipment

TRACTORS, COMBINES, DOZER & SPRAYERS

CASE IH MX240 CAB, MFWD, DSL, POWERSHIFT TRANS, FRONT AND REAR DUALS, 5 SETS REMOTES, 12,522 HOURS, SN:116442

CASE IH 7130 CAB, DSL, POWERSHIFT TRANS, 3 SET OF REMOTES, 15,450 HOURS, SN:17836

CASE IH 7130 CAB, DSL, POWERSHIFT TRANS, 3 SET OF REMOTES, 15,161 HOURS, SN:47689

GLEANER S77 SUPER 7 COMBINE, DUALS, 4X4, ELECTRIC BIN EXTENSIONS, 10" SCREEN, BACKUP CAMERA, HEATED & COOLED SEAT, 2737 ENG HRS, 1782 SEP HRS, SN: AGCRS7700CHTV7124

GLEANER S77 SUPER 7 COMBINE, DUALS, 4X4, ELECTRIC BIN EXTENSIONS, 10" SCREEN, BACKUP CAMERA, HEATED & COOLED SEAT, 2485 ENG HRS, 1764 SEP HRS, SN: AGCRS7700DHTV7307

AGCO 8200 30' FLEX GRAIN PLATFORM SN:HUW8454

AGCO 8000 30' FLEX GRAIN PLATFORM SN:HM84252

(2) AGCO 3000 8-ROW 38" CORN HEAD, ELECTRIC DECK PLATES POLY SNOOTS, SN:836RHM27612, 836RHN27760

AGCO 838 8-ROW CORN HEAD, 38" ROW, SN:83615166

AGCO 8-ROW 38" CORN HEAD

JD 550G TC DOZER, DSL, POWERSHIFT TRANS, 6-WAY HYD BLADE, UNVERIFIED HRS SN: T0550GL822537

JD 6700 4-WHEEL SPRAYER, 60' FRONT FOLD BOOMS, JD RATE CONTROLLER, TEE JET MATRIX 430 LIGHT BAR SYSTEM, SN:004215, 3563 HRS

(3) JD 6000 SPRAYERS, 8-ROW REAR FOLD BOOMS (2) W/ EASY RIDE FRONT END (2) WITH TOPPER VALVE

JD 6000 SPRAYER, YELLOW TOP, 8-ROW REARFOLD BOOMS, EASY RIDE FRONT END (MISSING PUMP)

TRUCKS, TRAILERS & FORKLIFT

2000 MACK DAY CAB, MACK E7-427, DSL ENG, 10 SPD EATON FULLER TRANS, WETLINE, 555,271 MILES, SN:1M1AA18Y61W135791

1994 MACK TANDUM DUMP TRUCK, E7-350 MACK DSL ENG, 9 SPD EATON FULLER TRANS OX 16' STEEP DUMP, ROLLOVER COVER, (MILES UNVERIFIED)

1975 IH LOADSTAR 1800 10-WHEELER, GAS ENGINE, 5 SPD WITH 2 STICKS, AIR BRAKES, 22' TWIN CYL DUMP 4'6" GRAIN SIDES

1997 CPS STEEL HOPPER BOTTOM, 40', ROLLOVER COVER

1972 ROGERS 35-TON LOWBOY, 30', REAR HYD RAMPS

NISSAN 3000, 3000# FORKLIFT, LP ENGINE, SELLS WITH TOBACCO BALE SQUEEZE, 6973 HRS, SN: F01A15V

EQUIPMENT

CASE-IH 1230 EARLY RISER 8-ROW VACUUM STACK FOLD PLANTER, 38" ROW SPACING, ROW MARKERS, INSECTICIDE HOPPERS, 2X2 SPRAY, NITROGEN APPLICATORS, SN: YAS008860

CASE IH RMX 340 52-BLADE WINGFOLD DISC, 9" SPACING, 18'

(2) CASE IH 5400 SOYBEAN SPECIAL, 3PT PLANTER, (15) 15" ROWS, ROW MARKERS, YETTER ROW CLEANERS, SPRAY BOOM, 2X2 FERTILIZER JOHN BLUE PUMPS

CASE-IH DMI TIGERMATE 26' FIELD CULTIVATOR, ROLLING BASKETS, KNOCK ON POINTS, POLY SHANK GUARDS

UNVERFERTH 332 5 SHANK ZONE BUILDER, AUTO RESET SHANKS, RUBBER PACK WHEELS, 38" SPACING

CASE-IH 3800 52-BLADE WINGFOLD DISC, 9" SPACING, BRAND NEW BLADES & BEARINGS ON FRONT

CASE-IH 3900 68-BLADE WING FOLD DISC, 9" SPACING

FIRST PRODUCTS 4-ROW FERTILIZER APPLICATOR, HYD DRIVE 46" ROW SPACING

E-Z TRAIL 500 GRAIN CART, 1000 PTO

CASE 5000 NO TILL CADDY CART, 7 1/2" SPACING

CRUST BUSTER SPEED KING SEED TENDER, TANDEM AXLE, HONDA ENGINE

UNVERFERTH 20' FIELD CULTIVATOR, HYD FOLD

FORREST CITY 8-ROW VERTICAL FOLD RIPPER BEDDER , 38", DIRT DOOR

CASE IH 30' ROTARY HOE, HYD FOLD, 3 PT

IH 7 SHANK V-RIPPER, AUTO RESET SHANKS

E-Z TRAIL 680 HEADER CART

(2) UNVERFERTH HT-25 HEADER TRAILER

KIBROS UT125 HEADER TRAILER

SIMON BOOM LIFT, 4 CYL PERKINS DSL ENG, APPROX 40' REACH, 9277 HRS

WESTFIELD 10" 9' INCLINE HOPPER BOTTOM AUGER, 3HP MOTOR

SHEPPARD 8-ROW 38" LAYBY RIG, ACE HYD PUMP, 300 GAL, HYD FOLD

CASE-IH 181 15' ROTARY HOE

AGCO 8000 30' FLEX GRAIN PLATFORM (PARTS MACHINE)

GRAIN STORAGE & AUGERS (ALL SINGLE-PHASE MOTORS)

CHICAGO EASTERN 35,000 BU BIN, 8" SWEEP, 2 FANS, 42' DIAMETER

LONG 25,000 BU BIN, 8" SWEEP, FAN, 36' DIAMETER

(4) READ 15,000 BU BIN, 8" UNLOADING SWEEP, 2 SELLS WITH SUKUP FAN, ROOF VENTS, 30' DIAMETER

LONG 4500 BU BIN 8" UNLOADING SWEEP, FAN, 18' DIAMETER

HONEYVILLE 3000 BU HR, 115' GRAIN ELEVATOR, 8 DOWNSPOUTS INSTALLED IN 2005

SUKUP DUAL PLENUM FAN

(3) HUTCHINSON 8"x10" UPRIGHT UNLOADING AUGER, 16'

HUTCHINSON 8" ELECTRIC AUGER, 11'6" 10HP MOTOR

HUTCHINSON 8" ELECTRIC AUGER, 11' 10HP MOTOR

HUTCHINSON 8" ELECTRIC AUGER, 12' 10HP MOTOR

HUTCHINSON 8" ELECTRIC AUGER, 13' 10HP MOTOR

WESTFIELD WR 80-61 AUGER, PTO

WESTFIELD WR 80-51 AUGER, PTO

FOR MORE INFORMATION CALL LYNWOOD @ (252) 560-1151



CHECK
www.jasonaycockauctioneering.com
FOR UPDATES.
(919) 495-0285.

Find us on  Follow us on 

DIRECTIONS: FROM SNOW HILL @ HWY 58/258 INTERSECTION, TRAVEL 8.4 MILES ON 258 TO FRED EVERETE RD. TURN RIGHT AND SALE SITE IS ON THE RIGHT. 2148 FRED EVERETT RD, KINSTON, NC

